

pictured: aluminum louver

FlowGrill louvers are developed for extreme circumstances and available in different designs, many functional executions and additional options.

**features SR5104:**

- applicable in maritime environment
- maintenance friendly
- small build-in depth
- simple installation
- various shapes possible

**options:**

- watertrap
- demister
- stormshutter
- sprays shutter

**material:**

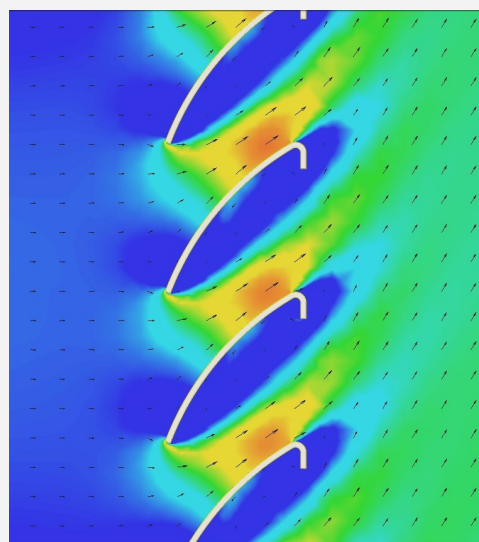
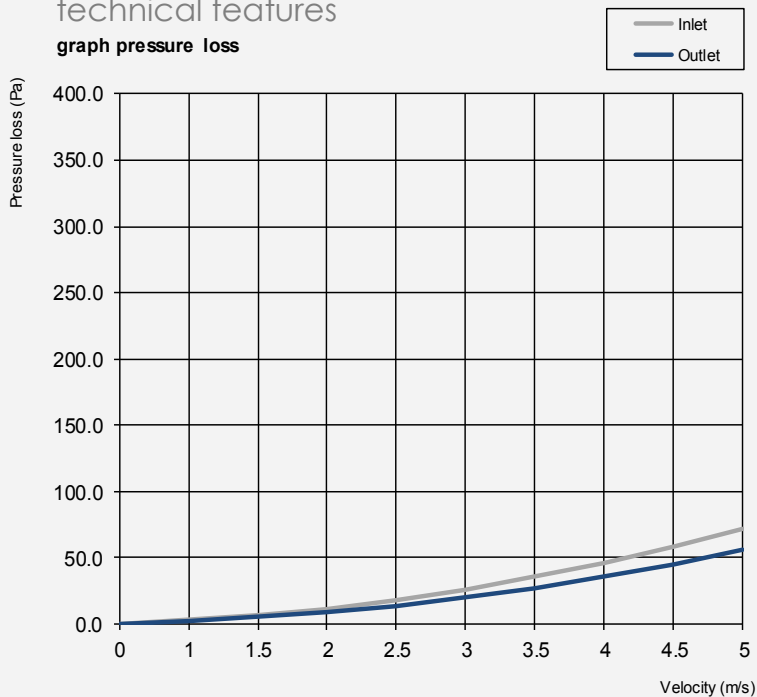
- aluminium (AlMg3)
- stainless steel (316L)
- special material on request

**frame type:**

- weld in frame (AlMg3, 316L)
- glue in frame
- bolted frame
- support construction
- tailor made

**technical features**

**graph pressure loss**



EFD simulation

- blade pitch 85 [mm]
- blade depth 80 [mm]
- min. built-in depth 103 [mm]  
(louver only)